



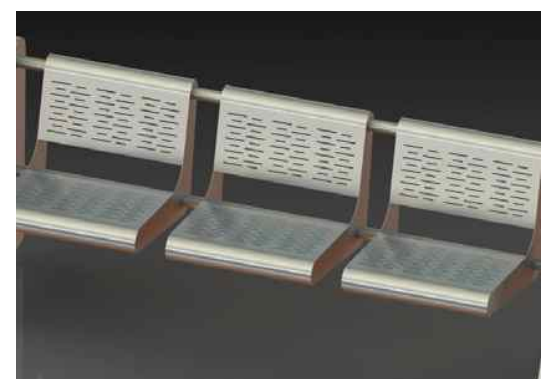
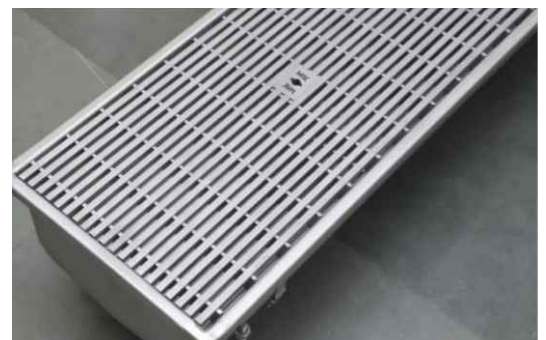
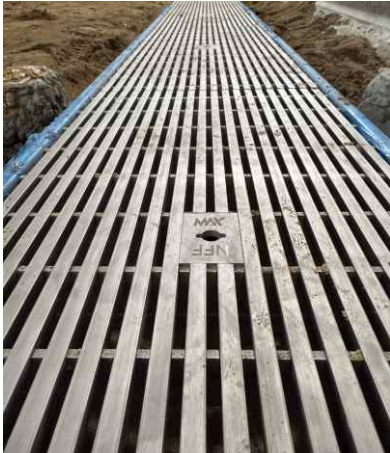
# NFF

المصنع الوطني لمنتجات الألياف الزجاجية  
National Factory For Fiberglass Products



## NATIONAL FACTORY

# Product Catalogue





**NFF**  
المصنع الوطني لمنتجات الألياف الزجاجية  
National Factory For Fiberglass Products

# المصنع الوطني لمنتجات الألياف الزجاجية National Factory For Fiberglass Products

NO	CONTENT TITLE	PAGE
01	About Us	01
02	Design & Features	03
03	Trench Drain Channel	05
04	Slot Drain channel	09
05	Shower Drain Channel	13
06	Floor Drain	15
07	Floor Cleanout	17
08	Industrial Gully	19
09	Frame with Grating	21
10	Pipes & Fittings	23
11	Kitchen Equipment / Appliances	25
07	Floor Cleanout	17



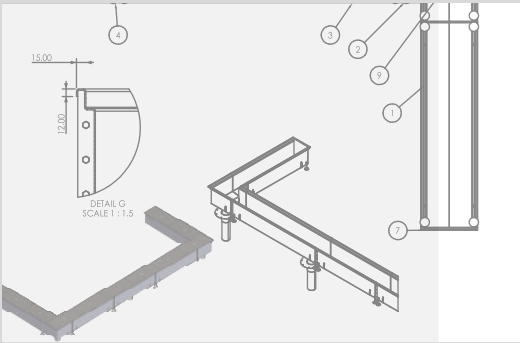
# ABOUT US

National Factory for Fiber Products, established in 2013, was founded with the clear vision of advancing the Kingdom's wastewater infrastructure. Specializing in the production and supply of high-quality SS (Stainless Steel) and GRP (Glass Reinforced Plastic) materials, the company is committed to providing complete, innovative water drainage solutions. Our focus on delivering comprehensive and reliable wastewater systems ensures that we meet the growing demands of both public and private sector projects. We offer a wide range of water drainage solutions & all designed to provide maximum durability, performance, and resistance against corrosion. By combining the strength of stainless steel and the versatility of glass-reinforced plastic, we provide materials that withstand the harshest environmental conditions, ensuring long-term reliability and minimal maintenance. Our dedication to excellence, continuous innovation, and sustainable practices allows us to deliver tailored, cost-effective solutions that meet the unique requirements of every project. Each product is engineered to the highest industry standards, guaranteeing long-lasting, efficient, and safe drainage systems for our clients. National Factory for Fiber Products is a trusted partner in the Kingdom's infrastructure development, supporting key industries with high-performance drainage solutions that enhance safety, operational efficiency, and environmental responsibility. As we continue to grow, we remain committed to providing cutting-edge products that contribute to the Kingdom's ongoing progress and sustainability.





## KEY FACTORS



### Innovation and Customization

- We emphasize innovation in product design and engineering, continuously developing new solutions to meet evolving industry needs.
- Our ability to customize products allows us to tailor solutions to specific project requirements, providing flexibility and versatility.



### Quality and Reliability

- We prioritize quality craftsmanship and use premium materials to ensure durability, longevity, and performance of our water drainage solutions.
- Rigorous quality control processes and adherence to international standards set us apart as a reliable provider of high-quality products.



### Hygiene & Safety

- Hygiene with highest levels of safety for vulnerable areas.
- The design of our products are based on EHEDG guidelines, and our production based on fast and effective drainage of building interiors, which helps in maintain safety and hygiene in industrial kitchens, hospitals, ablutions area and production facilities.



### Expertise and Experience

- With over a decade of experience in the industry, we have amassed valuable expertise in water drainage technology and applications.
- Our knowledgeable team of engineers and professionals offers expert guidance and support to clients throughout the project lifecycle.

# Design & Features

Our design includes requirements such as,

## Standards

- EN 1672 — Food processing machinery — Basic concepts
- ISO 14159 — Hygiene requirements for the design of machinery.
- EHEDG Guidelines.
- Grate options available with load class ratings to BS EN 1253.

## Material

- Stainless steel grade AISI 304 & AISI 316Lmin. (1.4301 & 1.4404 according to EN 10088).

## Surface Treatment

- Fully pickle-passivated & electropolished as per requirement to ensure corrosion-free product.

## Sizes & Dimentions

- Drain Channel can be fully customised as per the site requirements. The size of Drain Channels are specified by (Width X Length X Height) along with Outlet Diameter.
- Fixed or two-part adjustable bodies, with horizontal or vertical outlets.
- Square or circular grates with various finishes (Plate, Ladder, Perforated, Mesh Anti-Slip).

## Easy & Fast Installation

- Low construction height.
- Telescopic solution - easy height adjustment
- Easy installation for water proofing
- Water tight & Non-leakage products
- Leveling facilities for perfect levelling & slop

## Low Maintenance

- Integral waste basket for easy cleaning and maintenance & foul air trap to odor & bad smell.

## Easy & Fast Installation

- Low construction height.
- Telescopic solution - easy height adjustment
- Easy installation for water proofing
- Water tight & Non-leakage products
- Leveling facilities for perfect levelling & slop







## Trench Drain Channel – Introduction

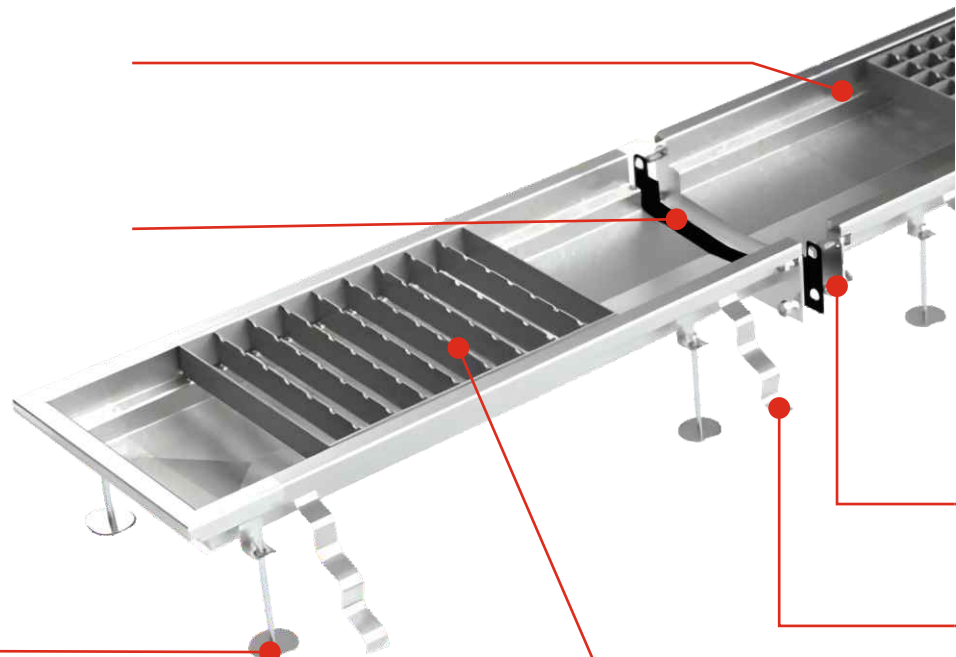
MAX Building Solutions offers a comprehensive range of trench drain channels suitable for all common applications and floor types, including concrete, tiles, resin, and vinyl. Our trench drain channels are designed with strict adherence to hygienic design requirements, ensuring MAXimum efficiency and cleanliness in various environments.

The versatility of our channel portfolio allows for easy customization, making it simple for customers to select a solution that fits their specific project needs. Key parameters like channel length, depth, and outlet position can be tailored without affecting delivery lead times, offering a seamless and efficient experience.

## Trench Drain Channel – Ordering

Specifying the dimensions for your trench drain channel is straightforward and tailored to your project's requirements. To specify your channel :

- The specifications for slot drain channels are based on site and client requirements, which must be provided by the client.
- Alternatively, contact our Sales/Technical Department for assistance in placing your order or for more information.



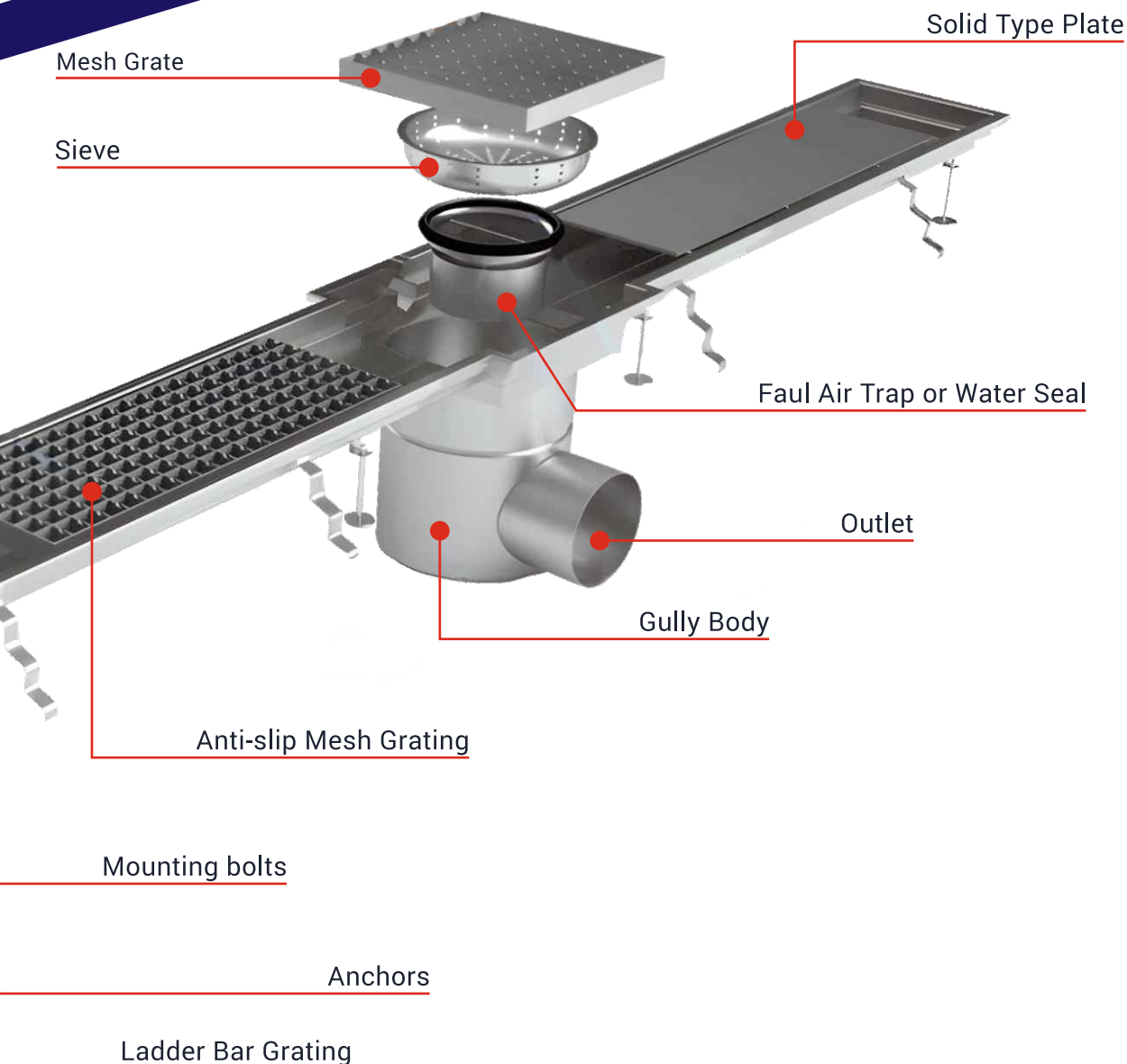


## Product Information

The hygienic box channels from MAX Building Solutions are ideal for concrete, tile, and resin floors. They can be easily specified based on your project requirements or selected from predefined fixed dimensions for convenience.

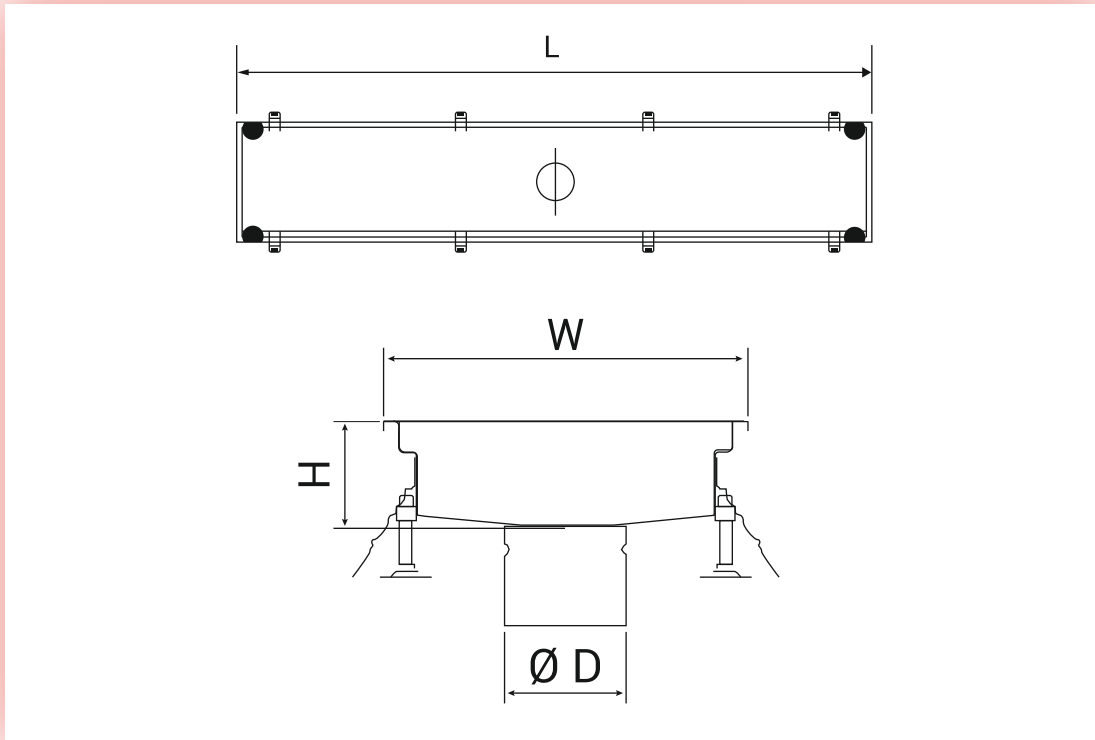
### Key Features:

- **Hygienic Design:** Designed in accordance with EN 1672, EN ISO 14159, and EHEDG guidelines ensuring compliance with strict hygiene standards.
- **Certifications:** Tested and certified for load class to meet EN 1253-1 standards for drainage systems.
- **Material Options:** Available in high-quality stainless steel grades:
  - 1.4301 (Grade 304) or 1.4404 (Grade 316L).
- **Finish & Durability:** Fully pickled and passivated for long-lasting corrosion resistance and smooth, hygienic surfaces.
- **Material Thickness :** As per client requirement



## Channel Sizes

Trench drains can be fully customized as per the requirements. The size of the trench drains is specified by **WIDTH X LENGTH X HEIGHT** along with outlet diameter



## Types of Joints

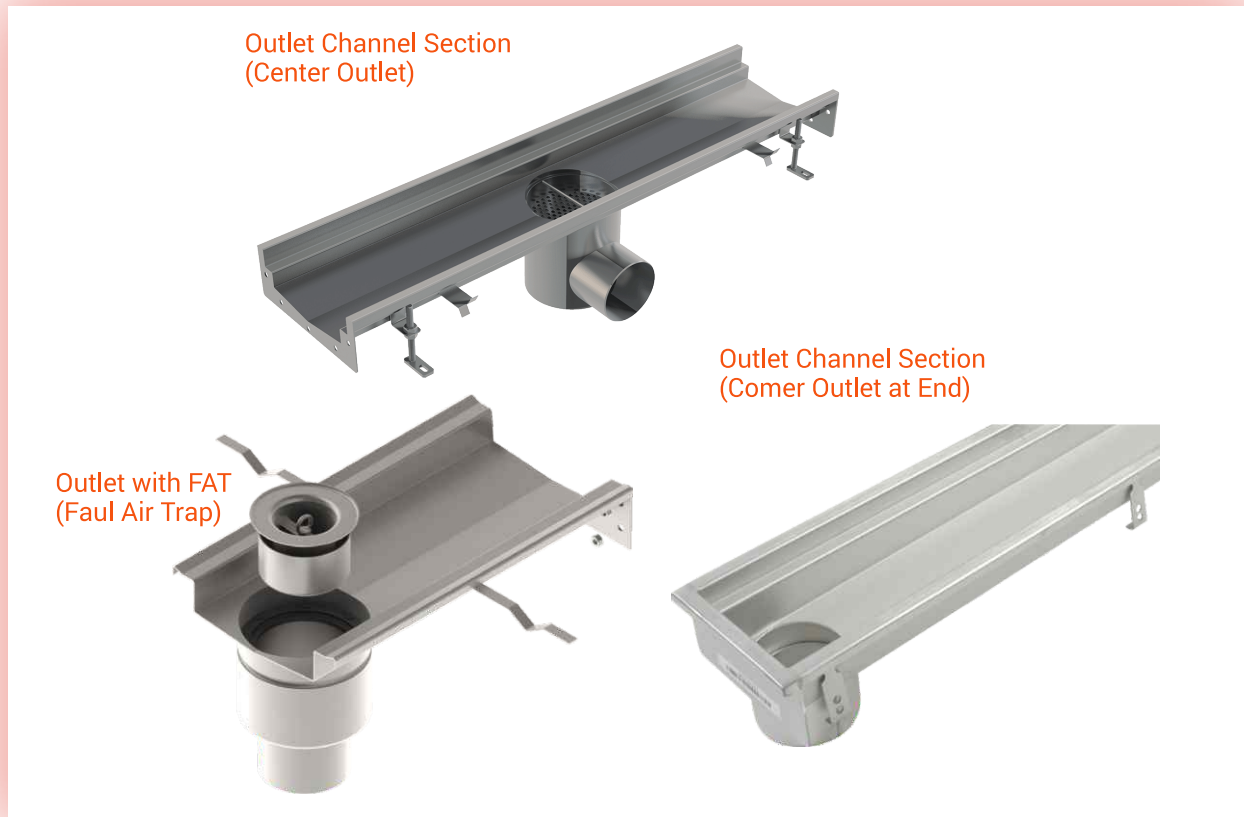
Corner Joint Channel Section



T-Shape Joint Channel Section







## Flow Rates

Flow rates represent the system's capability to consistently drain a specified volume of water. Generally, flow rates are primarily determined by the size of the gully, ensuring efficient drainage tailored to project requirements.

Flow Rates		
Outlet Position	Outlet diameter [mm]	Minimal flow rate [l/s]
Vertical Outlet	70/75	1.4
	100/110	1.6
	70/75	2.7
	100/110	3.5
	100/110	5.0
	150/160	5.0
	70/75	1.2
	100/110	1.2
Horizontal Outlet	70/75	1.4
	100/110	1.6
	70/75	2.6
	100/110	2.8
	100/110	4.4
	70/75	1.2

Flow rates are measured according to EN 1253. Flow rate performance is without Silt basket (flow rates with empty Silt basket are approximately 15% lower than the values stated)

## Slot Drain Channel – Introduction

National Factory For Fiberglass Products offers a comprehensive range of Slot drainchannels suitable for all common applications and floor types, including concrete, tiles, resin, and vinyl. Our trench drain channels are designed with strict adherence to hygienic design requirements, ensuring MAXimum efficiency and cleanliness in various environments.

The versatility of our channel portfolio allows for easy customization, making it simple for customers to select a solution that fits their specific project needs. Key parameters like channel length, depth, and outlet position can be tailored without affecting delivery lead times, offering a seamless and efficient experience.

## Slot Drain Channel – Ordering

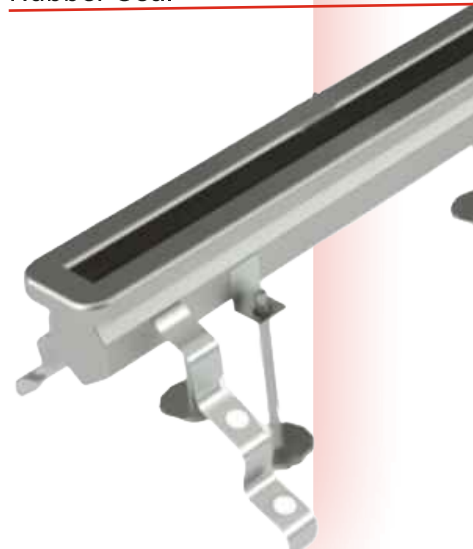
Specifying the dimensions for your Slot drain channel is straight forward and tailored to your project's requirements. To specify your channel :

- The specifications for slot drain channels are based on site and client requirements, which must be provided by the client.
- Alternatively, contact our Sales/Technical Department for assistance in placing your order or for more information.



Slot Drain Channel Body

Rubber Seal



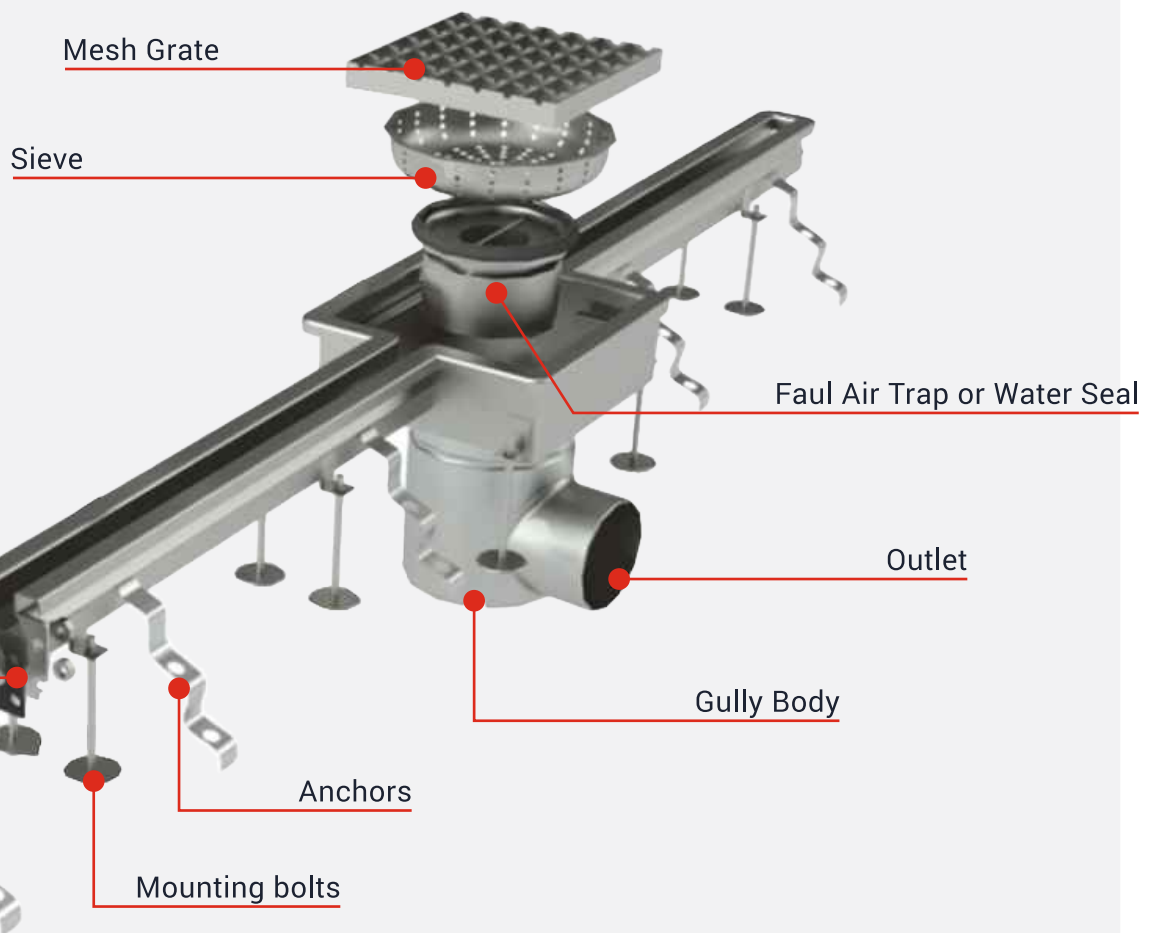


## Product Information

The slot drain channels from MAX Building Solutions are ideal for concrete, tile, and resin floors. They can be easily specified based on your project requirements or selected from predefined fixed dimensions for convenience.

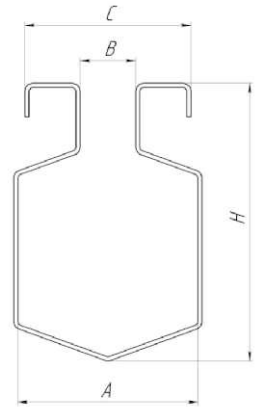
### Key Features:

- **Hygienic Design:** Designed in accordance with EN 1672, EN ISO 14159, and EHEDG guidelines ensuring compliance with strict hygiene standards.
- **Certifications:** Tested and certified for load class to meet EN 1253-1 standards for drainage systems.
- **Material Options:** Available in high-quality stainless steel grades:
  - 1.4301 (Grade 304) or 1.4404 (Grade 316L).
- **Finish & Durability:** Fully pickled and passivated for long-lasting corrosion resistance and smooth, hygienic surfaces.
- **Material Thickness :** As per client requirement



## Channel Specifications

- According to EN 1253-2:2015
- Designed and optimised for use in commercial.
- Available along with gratings for load classes up to C 250 (EN 1253).
- Suitable for vinyl, tiled, concrete and resin floors.
- Slot Drain Channel can be fully customised as per the site requirements. The size of Slot Drain Channels are specified by (Slot Width X Length X Height) along with Outlet Diameter.



## Types of Slot Drain Channel

U-Shape Type Channel Section



Hex-Type Channel Section



Double Slot Type Channel Section



Single Slot Type Channel Section



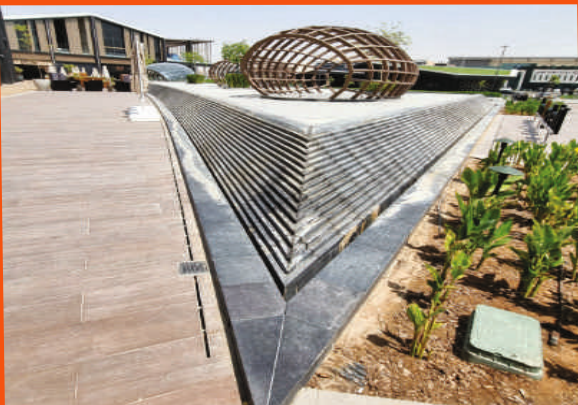
Triple Slot Type Channel Section



Box Type Slot Drain Channel Section



## Slot Drain Channel References





## Shower Drain Channel – Introduction

MAX Building Solutions' Shower Drain Channels are designed to provide efficient, stylish drainage for modern bathrooms. Engineered with precision, these channels offer a seamless blend of functionality and aesthetics, ensuring excellent water flow while complementing bathroom designs.

Our shower drain channels are crafted from high-quality stainless steel, ensuring durability and corrosion resistance in humid environments. With customizable options for grate finishes and channel lengths, they are suitable for various floor types, including tiles, resin, and vinyl. The easy-to-install design makes them an ideal choice for both residential and commercial applications, providing a reliable and low-maintenance drainage solution.

Discover the balance of style and performance with MAX Building Solutions Shower Drain Channels, crafted to elevate any bathroom space.

## Shower Drain Channel – Ordering

To order a Shower Drain Channel from MAX Building Solutions, please specify your project requirements to ensure a tailored solution. Key details such as channel length, width, grate finish, Grate type, and outlet position can be customized to meet specific needs.

- The specifications for Shower drain channels are based on site and client requirements, which must be provided by the client.
- Alternatively, contact our Sales/Technical Department for assistance in placing your order or for more information.



## Product Information

National Factory For Fiberglass Products Shower Drain Channels are designed to meet the demands of modern bathrooms, combining aesthetics with reliable performance. Our shower drains are crafted to ensure efficient water drainage, durability, and low maintenance. Below are the key features and specifications:

### Key Features:

- **Hygienic Design:** Designed in accordance with EN 1672, EN ISO 14159, and EHEDG guidelines ensuring compliance with strict hygiene standards.
- **Certifications:** Fully tested and certified to meet EN 1253-1 standards for indoor drainage systems.
- **Material Options:** Available in high-quality stainless steel grades:
  - 1.4301 (Grade 304) or 1.4404 (Grade 316L).

## Types of Shower Drain Channel

Quadrato Type



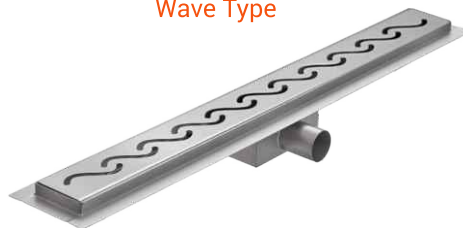
Recessed Type  
(Tile Insert)



Solid Top Type



Wave Type



## Floor Drain – Introduction

National Factory For Fiberglass Products's Floor Drains are crafted to provide reliable, hygienic drainage solutions for a wide range of environments, including commercial, industrial, and residential applications. These drains are designed to efficiently handle wastewater while preventing debris buildup, ensuring clean and safe floors in high-traffic areas.

Our floor drains are made from premium stainless steel, offering excellent corrosion resistance, durability, and ease of maintenance. With options for standard or compact models, adjustable outlets, and various grate finishes, they provide flexibility to suit different load requirements and floor types.

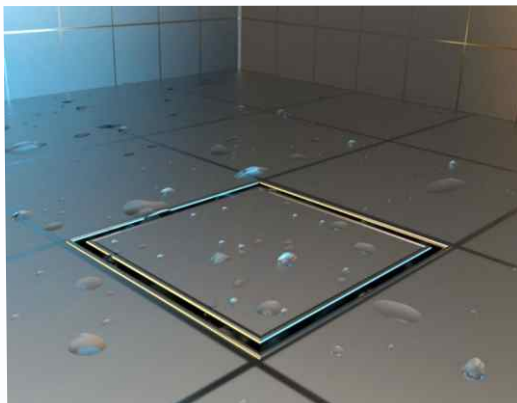
Whether in food processing facilities, healthcare settings, or commercial kitchens, MAX Building Solutions Floor Drains deliver dependable performance, contributing to a cleaner, more sanitary environment.

### Product Information

MAX Building Solutions' Floor Drains are designed for effective wastewater management across various settings, combining durability, high performance, and easy maintenance. Crafted from premium stainless steel, our floor drains meet stringent hygiene and quality standards, ensuring lasting reliability.

#### Key Features:

- **Material Options:** Available in high-quality stainless steel grades:
  - 1.4301 (Grade 304) or 1.4404 (Grade 316L).
- **Thickness :** As per Application
- **Standard Sizes :** 100mm X 100mm, 150mm X 150mm, 200mm X 200mm
- **Outlet Sizes :** D75, D100 & D150.





## Types of Floor Drain Channel

Tile Insert Floor Drain  
(Recessed Type)



Floor Drain Grating Set  
(With & Without Screwed Grate)



Floor Drain 3PC set



Solid Type Floor Drain



Customised Floor Drain



## Floor Cleanout – Introduction

National Factory For Fiberglass Products' Floor Cleanouts are engineered to provide convenient access to drainage systems for inspection, cleaning, and maintenance. Essential in maintaining optimal drainage performance, these cleanouts are designed for seamless integration with flooring, ensuring a smooth, unobtrusive appearance while enabling efficient upkeep.

Constructed from high-quality stainless steel, our floor cleanouts are highly durable, corrosion-resistant, and suitable for various environments, including commercial kitchens, healthcare facilities, and industrial spaces. With secure, easy-to-remove covers, MAX Building Solutions' Floor Cleanouts make it simple to access the drainage system without disrupting the surrounding floor area.

Offering both functionality and reliability, MAX's Floor Cleanouts are a crucial component for maintaining long-term drainage efficiency in demanding settings.

### Product Information

MAX Building Solutions Floor Cleanout are designed for effective wastewater management across various settings, combining durability, high performance, and easy maintenance. Crafted from premium stainless steel, our floor drains meet stringent hygiene and quality standards, ensuring lasting reliability.

#### Key Features:

- **Material Options:** Available in high-quality stainless steel grades:
  - 1.4301 (Grade 304) or 1.4404 (Grade 316L).
- **Thickness :** As per Application
- **Standard Sizes :** 100mm X 100mm, 150mm X 150mm, 200mm X 200mm
- **Outlet Sizes :** D75, D100 & D150.

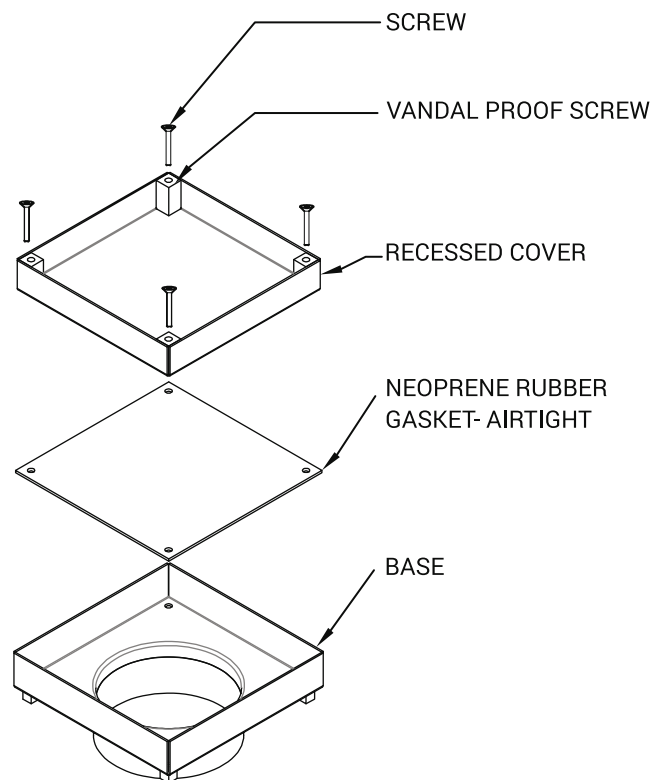


## Types of Floor Cleanout Channel

Floor Cleanout



Tile Insert Floor Cleanout  
(Recessed Type)





## Industrial Gully – Introduction

National Factory For Fiberglass Products's Industrial Gully systems are expertly crafted to manage high-capacity wastewater drainage in demanding industrial settings. Designed with precision, these gullies provide efficient flow and exceptional durability, meeting the rigorous hygiene and safety standards required in industries such as food processing, pharmaceuticals, and heavy manufacturing.

Made from premium stainless steel, our Industrial Gullies are corrosion-resistant and built to withstand harsh chemicals and high loads. They feature customizable options such as removable waste baskets, various outlet positions, and anti-slip grates, all designed to enhance functionality and safety.

With a focus on low-maintenance and efficient drainage, MAX Building Solutions Industrial Gullies offer an ideal solution for facilities needing robust, hygienic, and reliable drainage systems that meet both operational and regulatory standards.

## Industrial Gully – Ordering

Ordering an Industrial Gully from MAX Building Solutions is a simple, customized process tailored to meet your project specifications. Our industrial gullies offer a range of customization options, such as outlet size, gully depth, body material, and grate selection, ensuring a perfect fit for any drainage application.

- The specifications for Shower drain channels are based on site and client requirements, which must be provided by the client.
- Alternatively, contact our Sales/Technical Department for assistance in placing your order or for more information.



## Product Information

National Factory For Fiberglass Products' Industrial Gullies are designed to provide high-performance drainage for demanding industrial environments, ensuring effective wastewater management with durability and ease of maintenance. These gullies are engineered with premium stainless steel to withstand corrosive elements, high flow, and heavy loads, making them ideal for industries requiring robust drainage solutions.

### Key Features:

- **Hygienic Design:** Engineered to prevent debris buildup and allow for easy cleaning and maintenance, promoting hygiene and safety in environments like food processing and pharmaceuticals.
- **Material Quality:** Constructed from stainless steel grades 304 (1.4301) and 316L (1.4404) to offer superior corrosion resistance, ideal for both standard and high-demand applications.
- **Versatile Configurations:** Available in multiple depths and outlet orientations (horizontal or vertical) to fit various installation requirements and accommodate specific floor types.
- **Grate Options :** Choice of grate finishes and styles, including anti-slip options, to meet load class specifications and enhance safety in industrial settings.
- **Load Class Compliance :** Meets BS EN 1253 load class standards, ensuring durability and reliable performance under high-load conditions.

### Applications:

MAX Building Solutions' Industrial Gullies are well-suited for various industries, including:

- Food & Beverage Processing
- Chemical & Pharmaceutical Plants
- Heavy Manufacturing Facilities
- Commercial Kitchens and Hospitality Sectors

